



WOLDUMAR nature center

Mission: "To Educate People About The Natural Environment"

2018-19 Annual Report





Letter from the Executive Director

There's a well-known line in Henry David Thoreau's *Walden* that begins: "*I went to the woods because I wished to live deliberately, to front only the essential facts of life, and see if I could not learn what it had to teach...*" Diving into the text, Thoreau

experienced things in his woods that most of us never will, but I still find these words percolating in my mind when I venture into nature on my own or with my family, and certainly when we head out onto the trails with our "naturally curious" students here at Woldumar.

Over the past few years, we've been deliberate in emphasizing that Woldumar is much more than a park — it's also a *cause* and a *community*. To that first point, one needs look no further than our nonprofit mission, "*To educate people about the natural environment.*" Therein stated so simply, this organization exists to teach people (mostly kids) about science in nature. Through experiences like our School Field Study programs, ECO GREEN water quality testing, Annie's BIG Nature Lesson, and Camp Discovery, students are challenged to "*front only the essential facts of life,*" to contemplate, understand and appreciate the natural world, and to more deeply sense their place in it. If this isn't among the worthiest of causes, I don't know what is.

Community development is likewise critical to the organization. Over the past year, we've experience continued growth of partnerships with other organizations. From stewardship partners like Eaton County Pheasants Forever, Mid-Michigan CISMA, and Michigan Audubon, to educational partners in the MSU Graduate Women in Science and Learn517, to support from area businesses like Delta Dental, we are experiencing more mission success thanks to a supportive community. Further, we're growing a community of individuals: Those who participate as docents for living history demonstrations, serve on planning committees, those who help with stewardship, and even those who attend community events like our member mixer this past summer. We are so grateful to all of the people who form this rich community.

2019 was year of great mission success, and I'm so excited to welcome 2020! With a continued emphasis on those "*essential facts*" of science in nature, and relationship building within our community, these woods have much to teach us, and we are poised to accomplish great things in the coming year!

Kevin Wernet
Executive Director

2018/19 Community Support



*Dock Building with
MSU Engineers
without Borders*



*Chimney Swift Tower with
Michigan Audubon*



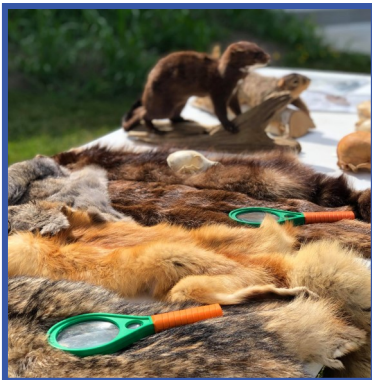
*Habitat work with Eaton
County Pheasants Forever*

*One of several projects
completed by blacksmiths*



*World Environmental Day
with General Motors*







Letter from the Hospitality Manager

Barn venues and nature adorned “rustic” weddings have been a popular wedding trend on the rise for many years. With so many barn venues around the state, you may ask what sets Woldumar Weddings apart from the rest?

When you book your wedding at Woldumar you are not just getting a barn venue. You are giving back to Lansing’s only non-profit nature center.

When you exchange vows under the tall towering trees in the walnut glen amphitheater you are saying “I do” to continuing years of environmental education, celebrations, conservation, preservation, restoration, recreation, and stewardship of a community resource.

When you dance the night away under twinkling lights in our historic barn, you are helping many children create their fondest memories out in nature, from warming up to hot cocoa after a snowshoe hike to catching frogs in the creek during summer camp.


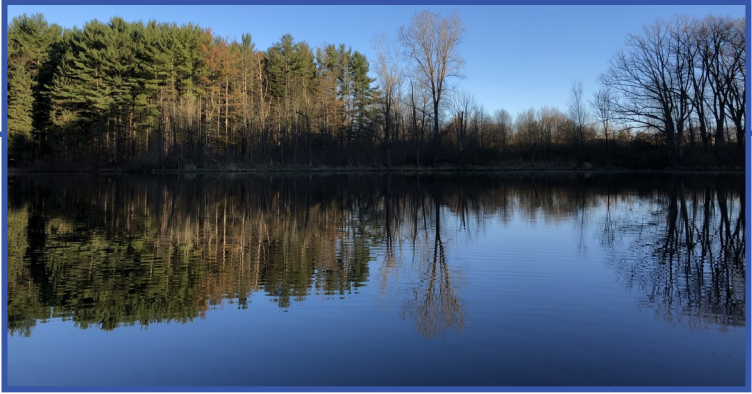
Having a wedding at Woldumar directly supports funding our mission to educate people about the natural environment. In return, we give an unforgettable wedding experience.

*Victoria Churchill-Barner
Hospitality Manager*

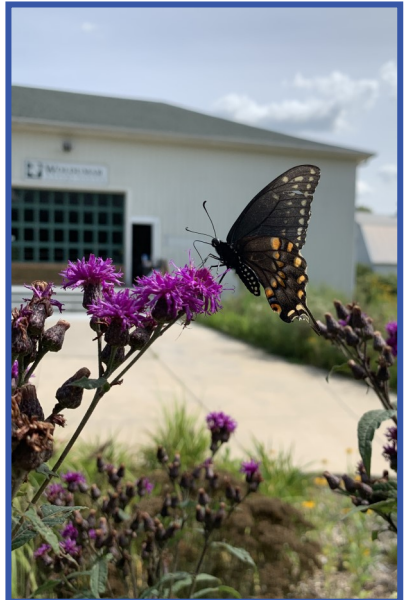
Thank you to the following couples who said “I do... for the naturally curious!”

- Ashley Allen & Tommy Robinson
- Elizabeth Emery & Robert Nowak
- Savanna Wallace & Christopher Elkins
- Erica Micheal & Justin Smith
- Mashall & Kelsey Gruber
- Sarah & Josh Morrish
- Dani & Keith Arias-Rotondo
- Saya & Justin Estee
- Raechel White & Nick Portelli
- Marjorie & Thomas Grill
- Katelyn Reid & Josh Majkowski
- Stephanie Schooley & Kevin Eggleston
- Sam & Nick Harris
- Jessica (Jessie) Zenchak & Erik Peterson
- Alecia Hansbarger & Derrick Schreiner
- Kiyalie Hunt & Ian Fredrick Wilson
- Eric Bumbalough & Sarah Murray
- Nichole leasher & Johnathon Snyder
- Katie Bell & Eric Pearce
- Melanie Joyce & Brad Austin
- Katt Arguello & Joeseeph Cowan
- Whitley & Will Depew
- KaLyn Wilder & Ryan Aiman
- Shelby Ensign & Joshua Ensign
- Alexis sandford-wilson & Micheal Mccreary





WOLDUMAR
for the naturally curious





Letter from the Program Director

What a year it has been for mission fulfillment at Woldumar Nature Center! I would like to first say “thank you” to all our members and community supporters who have contributed at Woldumar this year. From your support of our programming and fundraisers, our members and community are wonderful. I would like to touch on some of the exciting growth.

2019 saw a huge surge in teambuilding. Our high-quality Teambuilding, Ropes, Activities, Courses (TRAC) programming is attracting student and adult groups from all over Michigan. This program allows us to grow future leaders and expand the skills of existing leaders in our community. Woldumar is the premier location to “get your group on TRAC!”

Summer programming with Lansing Public Schools has added a 4th to 6th-grade “summer explorers” session at Woldumar. This was a wonderful addition to our Kindergarten to 3rd-grade group we have worked with for many years now.

Camp Discovery is thriving and growing. Camp staff has grown to accommodate 2 more groups of campers than last season. We saw the addition of both a Site and Activities Director on the administration staff of the camp to help accommodate the growing needs.

Stewardship of our beautiful and diverse property has been another area of growth! We have started a native seed collection project where students in the fall collect the seeds. In the winter we process and stratify the seed so they will germinate. Finally, in the spring students are able to broadcast them into our natural areas completing the circle. These hands-on projects are what allows our students to feel connected to Woldumar.

How are you connected to Woldumar and how do you want to see us grow? You are part of a cause and community at Woldumar and your support and membership are vital to its success.

*Dan Auer
Program Director*

Woldumar Programs

BY THE NUMBERS

<u>Program Name</u>	<u>Description</u>	<u>Total Participation</u>
Field Study	On- and off-site environmental education programs with schools	3975 students
Camp Discovery	Nine weeks of summer camp, spring & winter break camps, and 2 contracted camp programs	702 campers
Annie's Big Nature Lesson	Five days of nature programs with schools	664 students
ECO GREEN	Water Quality testing with secondary students and General motors volunteers	425 students
Teambuilding Ropes Course	Businesses, teams, and classes work on communication and creative problem solving	20 groups, 335 participants

Treasurer's Report

Summary of 2018/19 financial activity. Detailed reports and audited financial statements will be made available upon request.

Revenue

Donations & Membership	\$ 46,419.61
Trail Fees	\$ 2,230.12
Gift Shop	\$ 4,895.85
Camp	\$110,199.87
School Programs & TRAC	\$ 32,224.25
Hospitality	\$123,740.46
Grants & Restricted Gifts	\$ 24,542.68
Events	\$ 15,686.25
Misc	\$ 104.17
	\$360,043.26 *

Expenses

Operations	\$ 69,075.91
Wages	\$227,639.80
Program Expenses	\$ 6,891.06
Gift Shop	\$ 1,779.10
Events	\$ 4,589.86
Maintenance	\$ 16,442.62
Hospitality Expenses	\$ 3,680.00
	\$330,098.35 **

* Due to market fluctuations, WECT was unable to contribute this fiscal year.

** Does NOT include depreciation (non-cash) expense of \$18,404.04

Woldumar Nature Association Board of Directors

Chairperson

Irene Bashore,
General Motors Co

Vice-Chairperson

Zachary Behler Esq.,
Foster, Swift, Collins & Smith, P.C.

Treasurer

Julie Pfeifle, CPA,
Andrews Hooper Pavlik PLC

Secretary

Jason Wilkinson,
*State of MI - Office of Good
Government*

Member-At-Large

Lisa Ermak
Delta Dental

Randy Flick

Silentflick Productions

Gail Vander Stoep, Ph.D.,
Michigan State University

Anne Garwood,
*State of MI - Environment, Great
Lakes & Energy*

Stephaney Guild
Meridian Township

Endowment Trustees:

Steve Cessna

JB McCombs

Gary Pike

Woldumar Staff

Executive Director:

Kevin Wernet

Program Director:

Daniel Auer

Hospitality Manager:

Victoria Churchill-Barner

Bookkeeper:

Kathy Coffey

Groundskeeper:

Kevin Feldpausch

Education & Stewardship

Coordinator:

Emma Campbell

Naturalist/Guest Services:

Philip Stepnowski

Patrick Reichel



Thank You!

TO OUR MEMBERS AND SUPPORTERS

Woldumar is made possible by a generous community of supporters who believe in our mission “to educate people about the natural environment” and who understand the value of protecting and restoring local green space.

There are many ways to get involved at Woldumar! In the coming year, please consider elevating your membership level, becoming a monthly supporter, joining our stewardship corps or a planning committee.

Total Membership (as of 12/4/19): 314
Trail Sponsor: 25
Student/Senior: 38
Individual: 19
Household: 199
Life Members: 33



Special thanks

to those who make generous and consistent contributions of their time:

Docents: Inga & Art Kyler, Bonnie Eckart, Dale, Jan and Annie Dodds, Sylvia Colles

Wednesday “Garden Ladies”: Judy Gigante, Donna Brower, Connie Kelly, Joanne Tillotson, Dee Montgomery, and Sylvia Colles

Woldumar Blacksmiths, especially Bill Jenkins and Jeff Seelye

And Lisa Angell for tirelessly helping on the grounds all year!